



T2SERIES
(KI SERIES)
1kVA-3kVA

T2SERIES (KI Series) 1kVA to 3kVA

Formally launched in 2005 and superseding the highly regarded AEC KI Series UPS, the T2 Series benefits from the latest Microprocessor Control Unit (MCU) technology, which offers extended battery run times and is even greater value for money. The T2 is aimed at users that require protection from line voltage fluctuations and require a reliable and constant power source. The T2 is a sophisticated unit utilizing full digital control technology and by adding external batteries the T2 can offer run times of up to 8 hours. Available with power ratings of 1kVA, 2kVA and 3kVA each with LCD display and audible alarm keeping you quickly updated on mains and battery status. The T2 is also fitted with an intelligent test button enabling a self-test routine which also prevents the UPS from being inadvertently switched off.

INTEGRATED SMARTCARD SLOT

Fitted with an RS232 interface and USB port, which when used with the supplied software allows UPS status monitoring via connected PC. Support for optional SNMP network adapter is also provided enabling full network management functions. Under mains failure the T2 provides sinewave computer grade power and will start a controlled shutdown (when software installed) of your operating system and connected hardware, completely protecting your data and working documents.



FEATURES:

- Extensive log files
- Scheduled battery and inverter testing
- Scheduled system shutdown/restart
- User-customisable commands and messages
- Multiple UPS control from a single computer
- Remote Console Command module for remote multiple server shutdown
- Internal SNMP sub-agent for integration into existing NMS (e.g. HP OpenView, CA Unicenter)

UPS MANAGEMENT

Our specialised optional UPS management software gives you the power to monitor and control your UPS from remote locations.



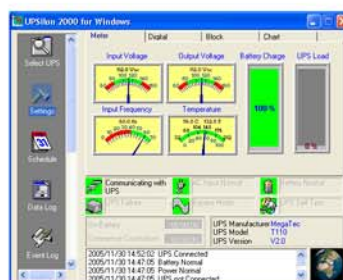
Screenshots of Net Agent Mini S

UPS MANAGEMENT SOFTWARE

The UPS management software is installed on a server or workstation connected to each UPS via the serial or optional USB port. Power failure, power restored, battery failure or eight events will be detected and the user informed. A shutdown will be initiated when the batteries are near to exhaustion or a technical problem occurs with the UPS. The UPS management software disconnects network connections, logs out users and closes open applications (subject to app/os support) before shutting down the operating system itself.



power at your fingertips



Screenshots of UPSilon Software



*ADVANCED MCU CONTROL TECHNOLOGY, ENHANCING UPS PERFORMANCE

*EXTENDED BATTERY RUN TIMES AVAILABLE

*COMPETITIVELY PRICED

*HIGH EFFICIENCY

*POWER RATINGS OF EITHER 1kVA, 2kVA OR 3kVA

*FITTED WITH RS232C INTERFACE (OPTIONAL USB AVAILABLE)

*OPTIONAL SNMP ADAPTER AVAILABLE

*CONFORMS TO ALL NECESSARY SAFETY AND CE SPECIFICATIONS

*LCD DISPLAY

*FAST VOLTAGE PROTECTION, PREDICTING MAINS FAILURE

*AUTOMATIC VOLTAGE REGULATION, SAVING BATTERY POWER (AVR)

*LOW BATTERY PROTECTION, PREVENTING DEEP DISCHARGE

*ADVANCED BATTERY MANAGEMENT

T2SERIES 1kVA-3kVA



SPECIFICATIONS	1kVA	2kVA	3kVA
Capacity			
Maximum Capacity	1000VA/700W	2000VA/1400W	3000VA/2100W
Input			
Input Voltage Range	220/230/1240 VAC +/-25% Single Phase w/ Ground		
Input Frequency	44Hz ~ 56Hz		
Output			
Output Voltage	220/ 230/ 240 VAC		
Output Voltage Regulation	± 2%		
Output Frequency	46~54Hz		
Output THD	< 3%		
Efficiency (Battery mode)	82%		
Output Frequency (Battery mode)	50 ± 0.1 Hz		
Overload Capability (Normal mode)	Sustaining 5 min @ 100 - 200%; 3 sec @ > 200%		
Overload Capability (Battery mode)	Sustaining 30 sec @ >100%; 1 sec @ 150%		
Battery			
Battery Type	Sealed lead-acid maintenance-free 12VDC/ 7Ah per cell		
Numbers of Batteries	2 cells	4 cells	6 cells
Recharge Time to 90%	< 8 hours (adjustable)		
Indication			
LCD	AC Mode, Battery Mode, Output Status, Battery Capacity, Overload, UPS Fault		
Audible Alarm			
Battery Mode	Long beeping		
Low Battery	Continuous beeping		
Overload	short beeping		
Dimensions			
W x H x D (mm)	150 x 220 x 460	220 x 330 x 487	220 x 330 x 487
Weight			
Net Weight w/ Battery (kgs)	19	32	42
Environmental			
Operating Temperature	-5~40° C		
Relative Humidity	< 95% (Non-Condensing)		
Audible Noise	<45dBA @ 1 Meter		
Communication Port	Standard RS232; USB or SNMP/HTTP (optional)		

All information contained in this brochure is purely indicative and can not be used to form any contractual obligations. Specification or design can be changed at anytime without notice.

Europe

AEC Power Control Ltd.
Systems House, Eckington Business Park
Rotherside Road, Eckington, Sheffield S21 4HL
UK
S21 4HL
TEL: +44 (0) 1246 431431
FAX: +44 (0) 1246 431444
E-mail: info@aeceuro.co.uk
web: www.aeceuro.co.uk

AEM
srl Via Karlsruhe 4 - 47100 Forlì - ITALY
E-mail: sales@aeceuro.com
web: www.aeceuro.com

Asia

Allis Eletric Co Ltd.
12F 19-11 San Chung Road Nankang District
Taipei 115, Taiwan.
TEL: +886 2 2655 3456
FAX: +886 2 2655 2286-7
E-mail: sales@allis.co.tw
web: www.allis.co.tw

Sheen Asia Eletronic (Guangzhou) co. Ltd
2F Building A2 beiwei Industrial area, GETDD,
Guangzhou, Peoples Republic Of China 510730
TEL: +86 20 8222 1370/1
FAX: +86 20 8222 1419
E-mail: sales@sheenasia.com
web: www.sheenasia.com

North America

Impact Power, Inc.
18218 East McDermott, Suite E
Irvine, California 92614 USA
Tel: (949) 477-9198
Fax: (949) 477-9195
E-mail: sales@impactpwr.com
web: www.impactpwr.com

